



The Herald Angel

SEPTEMBER 2009

NEWSLETTER

Welcome Back

I would like to welcome all of our new and returning students back to another new and promising school year.

The faculty and staff at MSPCS strive to ensure the education and well being of your child. We continuously make every effort to create an environment where your child feels accepted and respected as an individual. Our staff has planned fun, educational, and exciting things for your child to do throughout the year. I encourage you to see me with any questions, suggestions, and or concerns as they pertain to your child and the school.

Sandi Busta



Open House

Join us on September 24th at 7pm in the sanctuary - meet our teachers, staff and other parents! A Meet and Greet with the special area teachers will be in Fellowship Hall from 6:15-6:45 prior to the 7pm open house.

Mark your calendars!

NO SCHOOL
WE WILL BE
CLOSED FOR A
TEACHER WORK
DAY ON FRIDAY,
SEPTEMBER 25

Meet Our New Staff

Kindergarten

Kathi Obenour

Fourth Grade

Kathy Balboa

ESE

Melissa Stobs

Spanish

Cecilia Duenas

PE

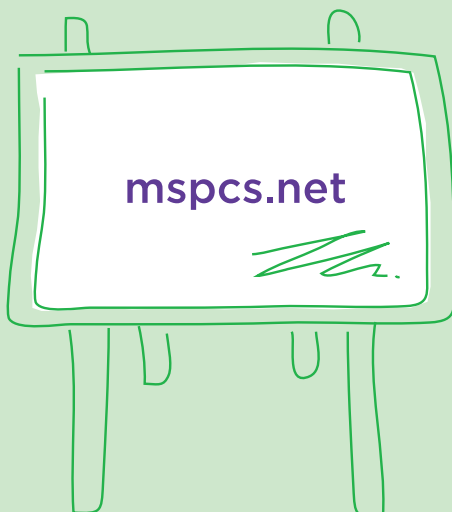
Arlan Freeman

Music

Alex Hoyt

Two year old

Alissa Nelson

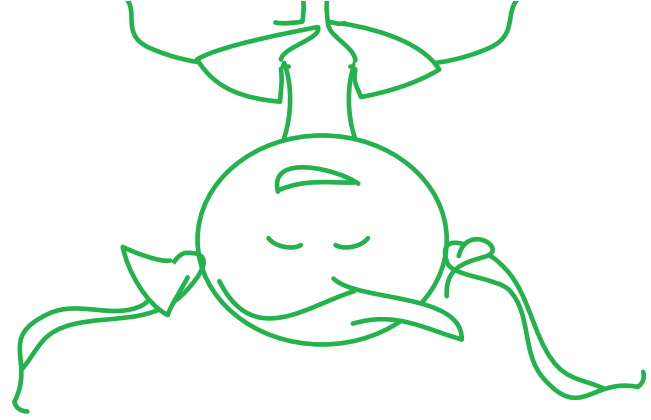


- For your child to be eligible to attend school, you must turn in updated health forms by the last form's expiration date.
- Tuition payments are due on the first day of the month, and payments are late on the tenth day of the month. No statement will be sent unless money was previously owed.
- When bringing medication to school, please remember that it must be in the original container indicating your child's name, type and date of prescribed medication. This must be given to the teacher so it can be stored properly. Paperwork must be completed for medication to be dispensed. **DO NOT LEAVE MEDICATION IN YOUR CHILD'S LUNCHBOX OR CUBBY.**
- Parking is prohibited in front of the main entrance (glass doors) of the preschool building at all times. Parking in front of the glass doors poses a hazard for children. This will be strictly enforced.
- **PLEASE DO NOT PARK IN THE STAFF PARKING LOT.** Teachers often carry heavy loads and rely on your consideration.
- Preschool Classrooms are open for students at 8:50 a.m. If you need to drop off your child earlier than that, please take them to early arrival, in Kathy Birkof's room. (Continued next page)

Parents We Need Your Help

Kindergarten through
Fifth Grade Yearbooks
are in Progress!

If you take pictures
throughout the year at
class parties, field trips,
etc., please put them on
a cd for us to use in the
yearbook. All cd's
should be given to
Liz Kern ASAP.



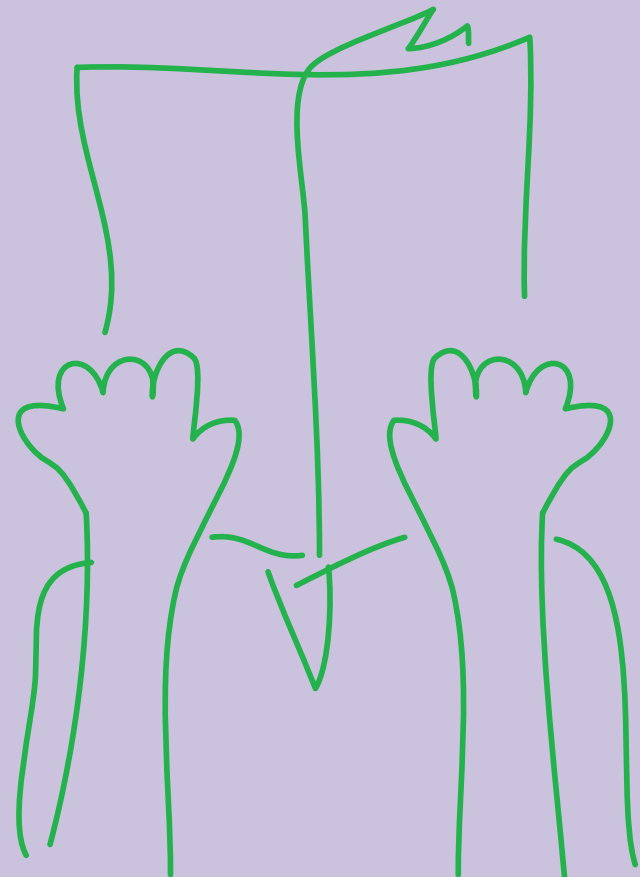
MSPCS follows Dade County guidelines regarding inclement weather...

Call the office if you need any more information
305-751-5417 / 305-759-2548
If a big storm is threatening us, we can always
use volunteers to prepare!

School Policy **Reminders**

(Continued)

- Parents, remember to sign in and out on the class sheet or After School Care Sign Out Sheets. This is an extra measure to protect your children. If you are picking up your child early, and they are scheduled to stay for an afternoon activity (aftercare, ballet, etc.), please let the teacher on the playground know that you are leaving with your child and they will not be staying for their after school activity.
- For your child's lunchbox, please include a spoon if needed. We have limited plastic utensils to hand out. Also, please resist the urge to put candy and chocolate in your child's lunch. Candy is sweet, but good health is sweeter! **REMEMBER WE ARE A NUT FREE SCHOOL.**
- 3 year olds not potty trained will be charged an additional fee per month.
- Elementary families, please remember that you are required to complete 20 volunteer hours per year.



Save-the-Date

Fall Festival

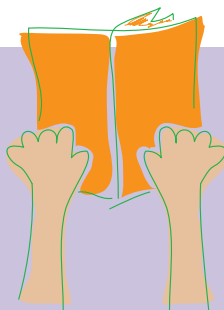
October 24, 10-3pm

If you are a vendor or know someone who would like to be a vendor at our Fall Festival, please have them call 305-751-5417. Booths are still available!

Join us for lots of games, food & vendors.
Fun for the whole family!

Thank You

We would like to thank the parent board for the Bike Rack located under the covered balcony at the elementary building.



The 1st-5th grades began the word of the day to “bridge the vocabulary gap”, a school wide program. Stay tuned for more info.



PUMPKIN TIME!

Please plan to volunteer the morning of Oct.10 at 8:30am to unload pumpkins and earn double church hours! Earn triple hours for helping inside the truck!

Volunteers will be needed daily to help with our upcoming pumpkin patch beginning Sunday, October 11!!



MSPCS is still participating in the Box Tops for Education program. Please continue to bring in your Box Tops throughout the year!

PRESCHOOL
t 305.751.5417

ELEMENTARY
t 305.759.2548

For more info Log onto www.msps.net or email schools@msps.net

